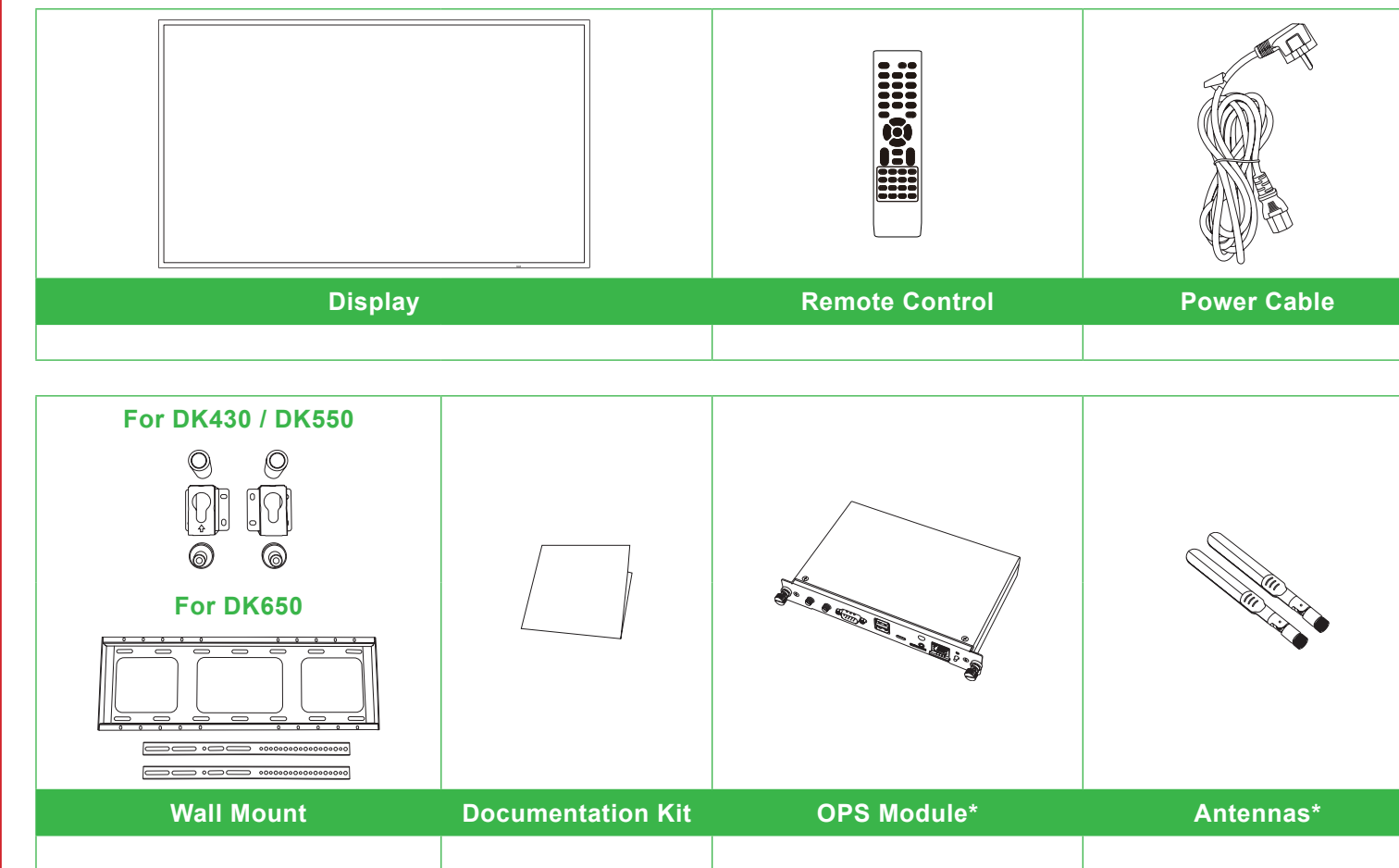


# NovoDisplay

## Quick Start Guide

(For DK430, DK550, and DK650)

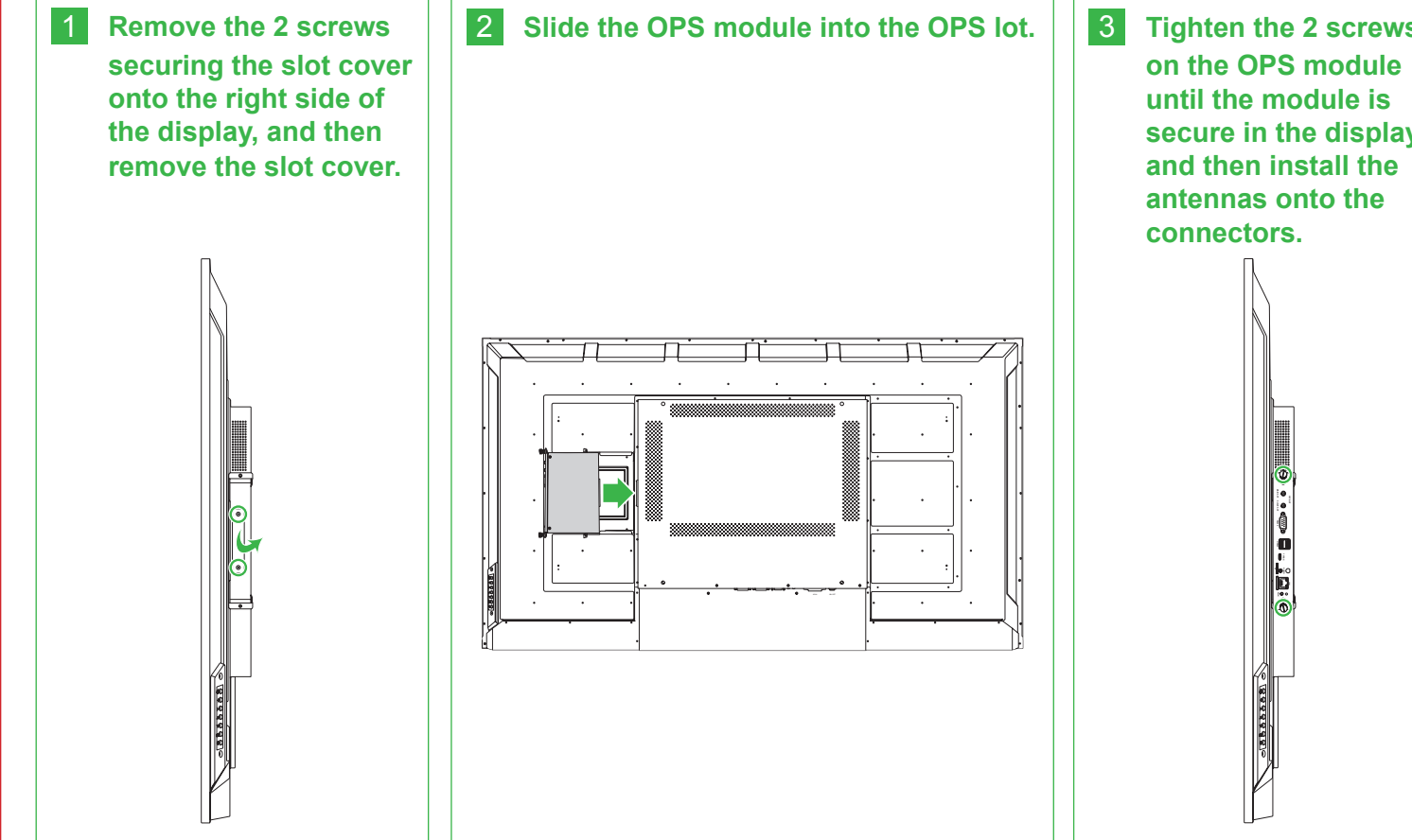
### Package Contents



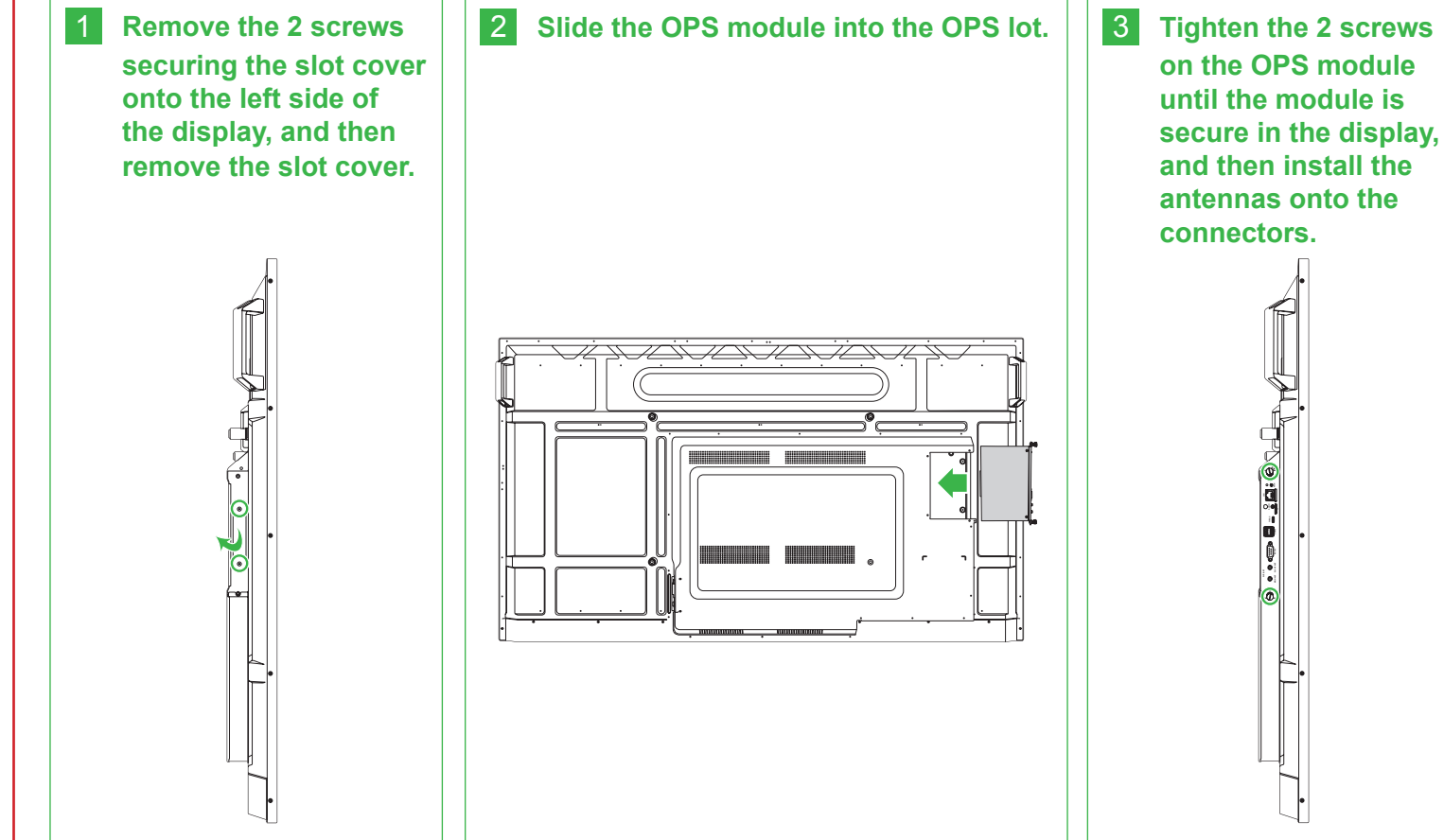
\*Item is included in a separate package.

### Installing the OPS Module

#### DK430 / DK550

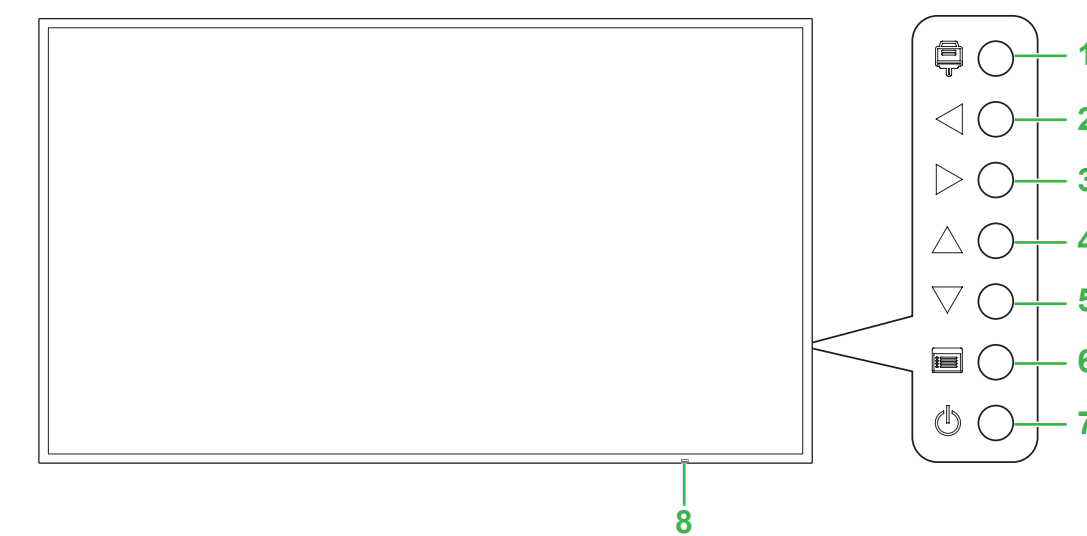


#### DK650



### Display Overview (Front)

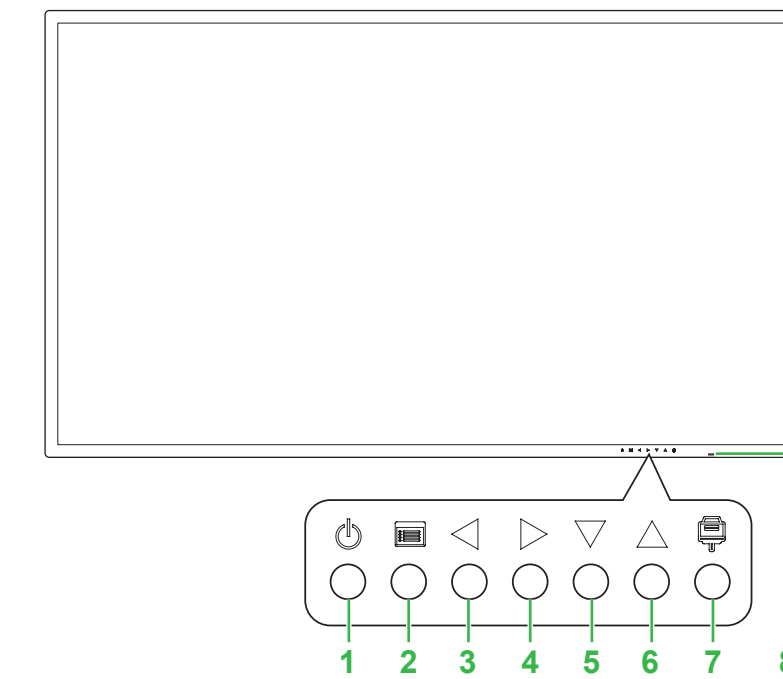
#### DK430 / DK550



- |                             |   |
|-----------------------------|---|
| 1 Input Source Button       | 5 Down Button   |
| 2 Volume Down / Left Button | 6 Menu Button   |
| 3 Volume Up / Right Button  | 7 Power Button  |
| 4 Up button                 | 8 Status Indicator LED / IR Sensor (for Remote Control) |

NOTE: Buttons located on the rear chassis.

#### DK650

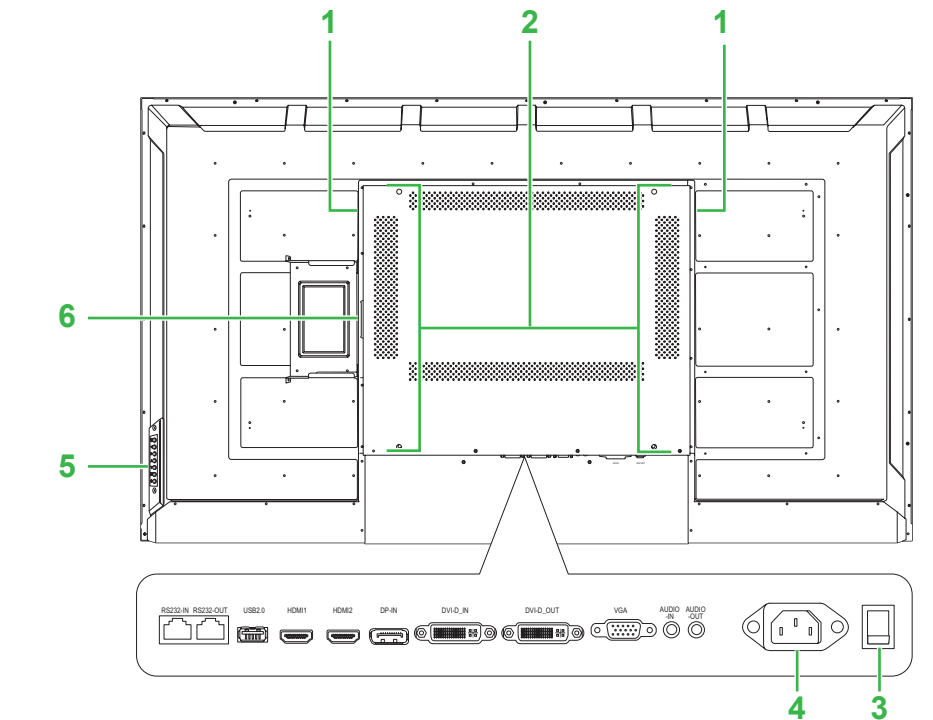


- |                             |   |
|-----------------------------|---|
| 1 Power Button              | 5 Down Button   |
| 2 Menu Button               | 6 Up Button   |
| 3 Volume Down / Left Button | 7 Input Source Button                                   |
| 4 Volume Up / Right Button  | 8 Status Indicator LED / IR Sensor (for Remote Control) |

NOTE: Buttons located on the bottom chassis.

### Display Overview (Rear)

#### DK430 / DK550



- |                          |                                      |
|--------------------------|--------------------------------------|
| 1 Speakers               | 4 Power Socket                       |
| 2 Wall Mount Screw Holes | 5 Control Panel (see Front Overview) |
| 3 Power Switch           | 6 OPS Slot                           |

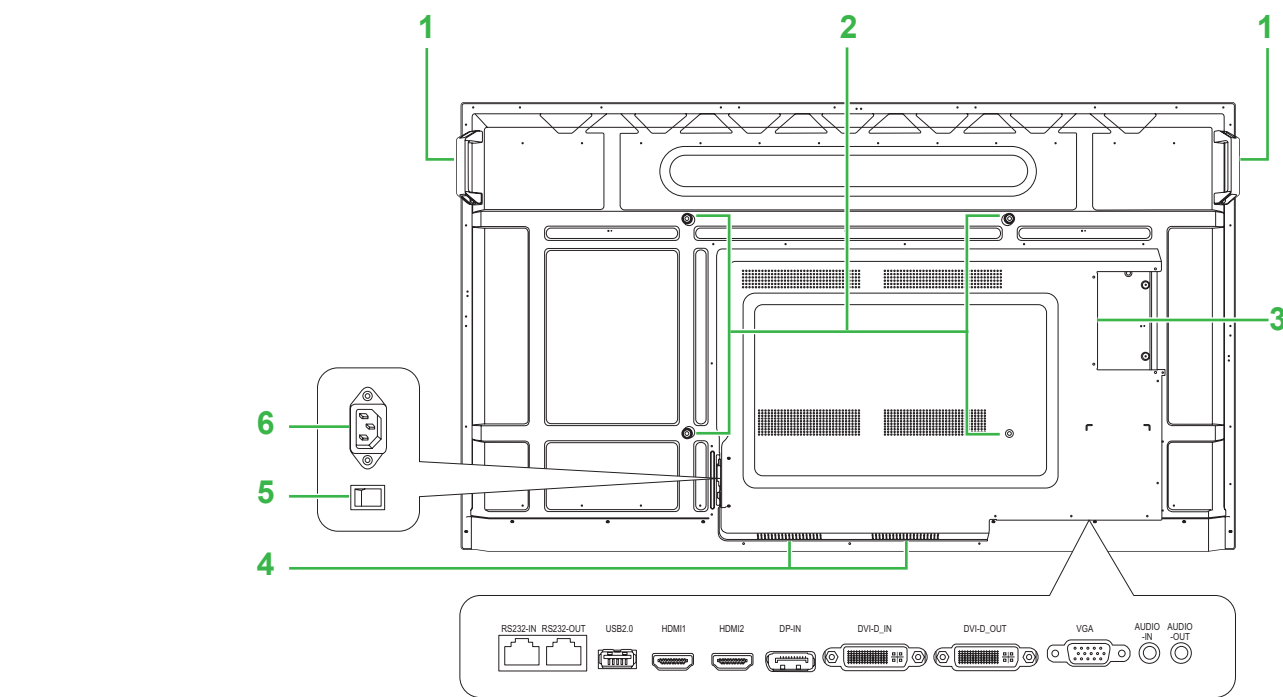
**Vivitek America**  
46101 Fremont Blvd, Fremont, CA 94538  
U.S.A.  
T: +1-510-668-5100  
F: +1-510-668-0680

**Vivitek Asia**  
7F, No. 186, Ruey Kuang Road, Neihu, Taipei 11491  
Taiwan R.O.C.  
T: +886-2-8797-2088  
F: +886-2-6600-2358

**Vivitek Europe**  
Zandsteen 15, 2132 MZ Hoofddorp  
The Netherlands  
T: +31-20-800-3960  
F: +31-20-655-0999

## Display Overview (Rear)

DK650

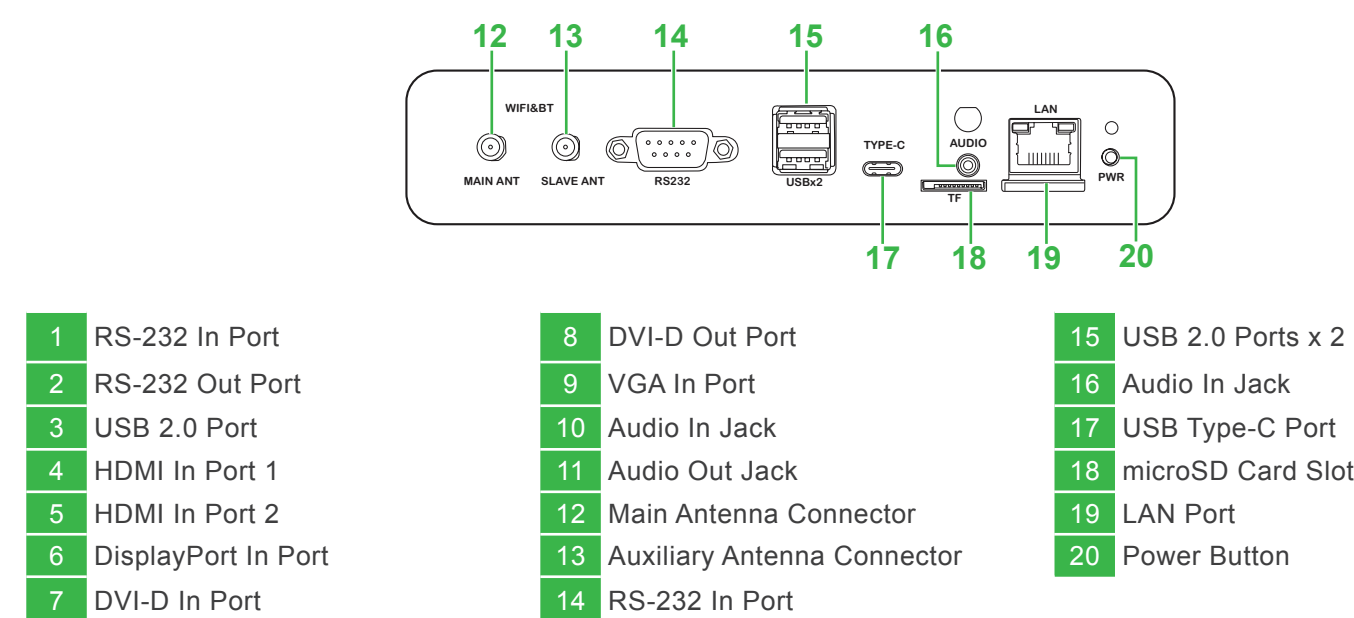


- 1 Handles
- 2 Wall Mount Screw Holes
- 3 OPS Slot
- 4 Speakers
- 5 Power Switch
- 6 Power Socket

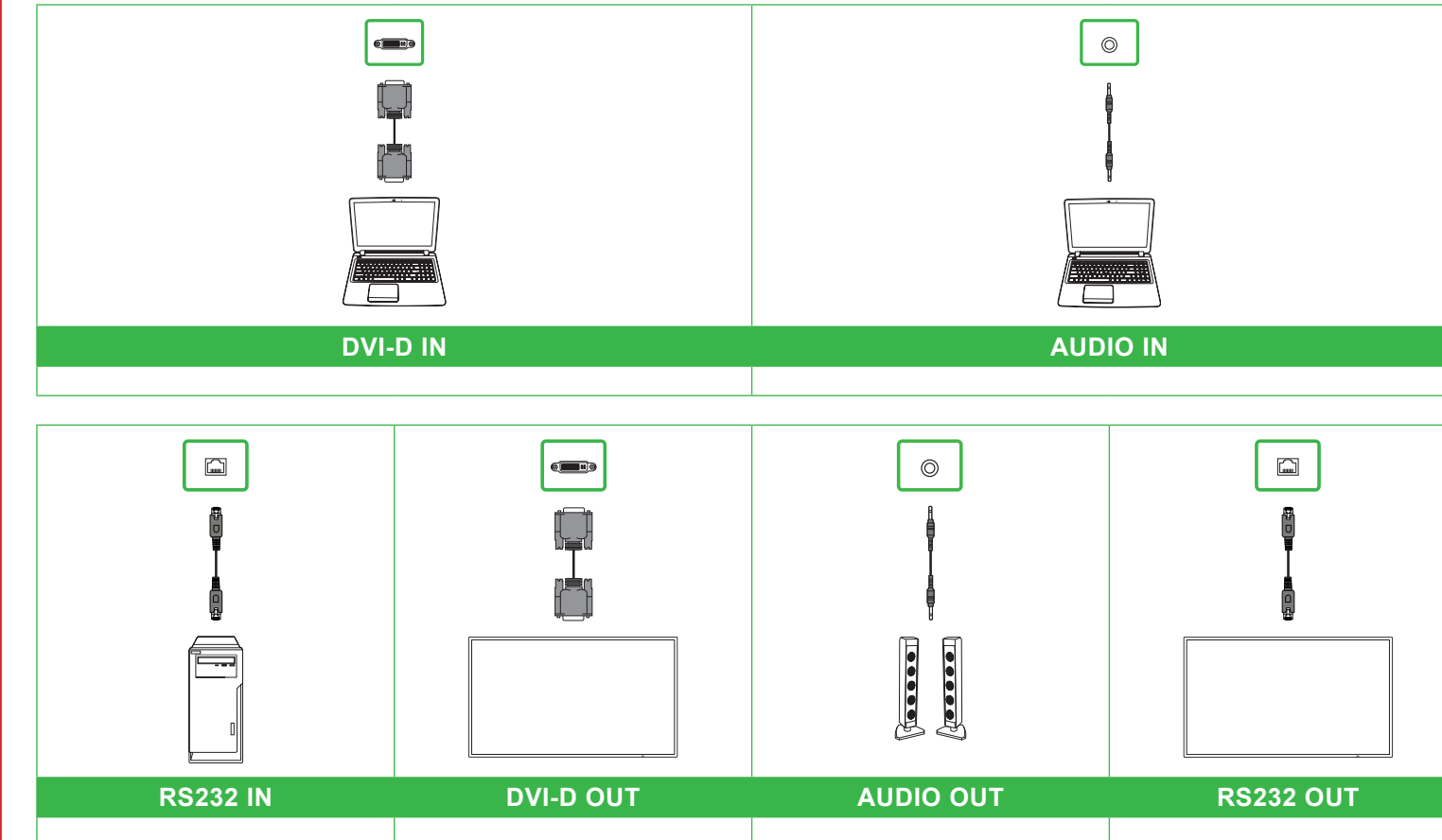
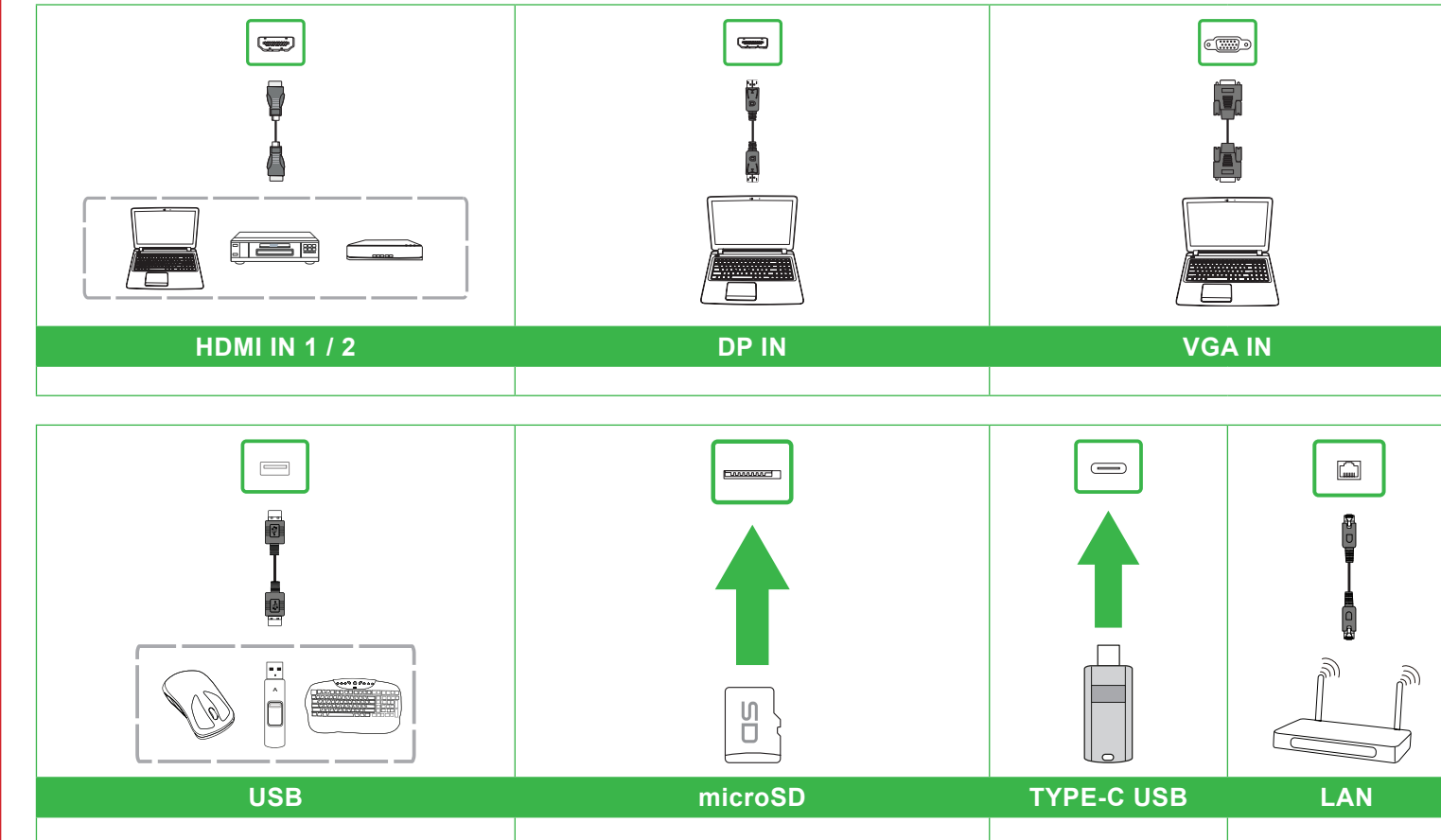
## Ports and Connectors

Bottom

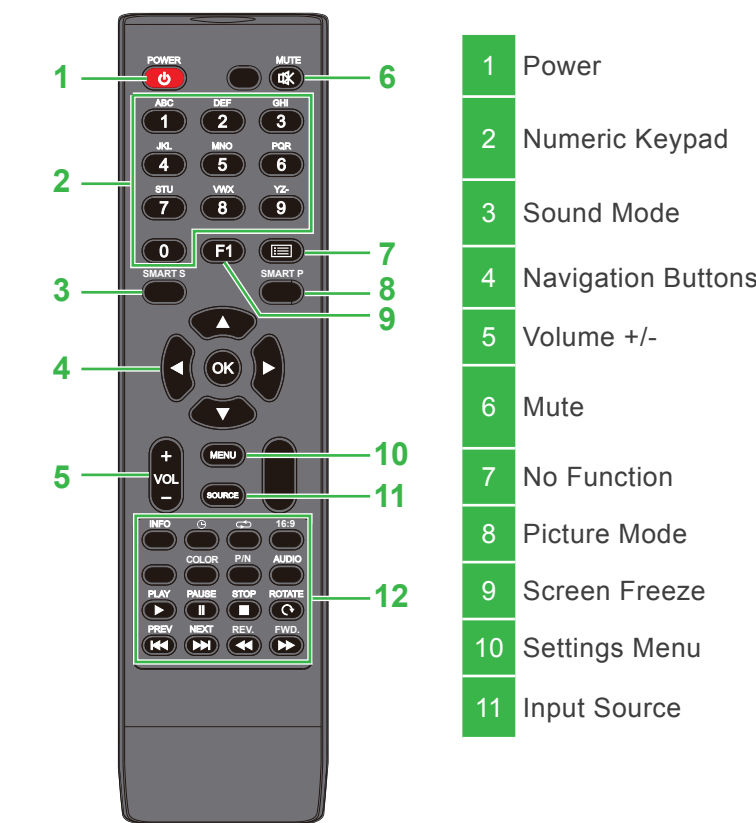
OPS Slot



## Connections



## Remote Control



- 1 Power
- 2 Numeric Keypad
- 3 Sound Mode
- 4 Navigation Buttons
- 5 Volume +/-
- 6 Mute
- 7 No Function
- 8 Picture Mode
- 9 Screen Freeze
- 10 Settings Menu
- 11 Input Source

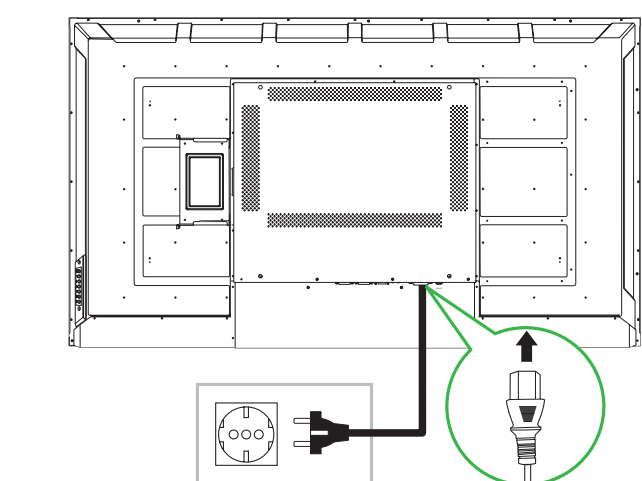
Function Buttons	
INFO: Display media information	PLAY*: Play media file
⏸: Sleep Timer	PAUSE*: Pause media file
↺ Repeat	STOP*: Stop media file
16:9: Zoom	ROTATE*: Rotate image
COLOR: Switch Color Temperature	PREV*: Previous media file
P/N: No function	NEXT*: Next media file
AUDIO: No function	REV*: Rewind media
	FWD*: Fast Forward media

\*Only functional for USB input sources.

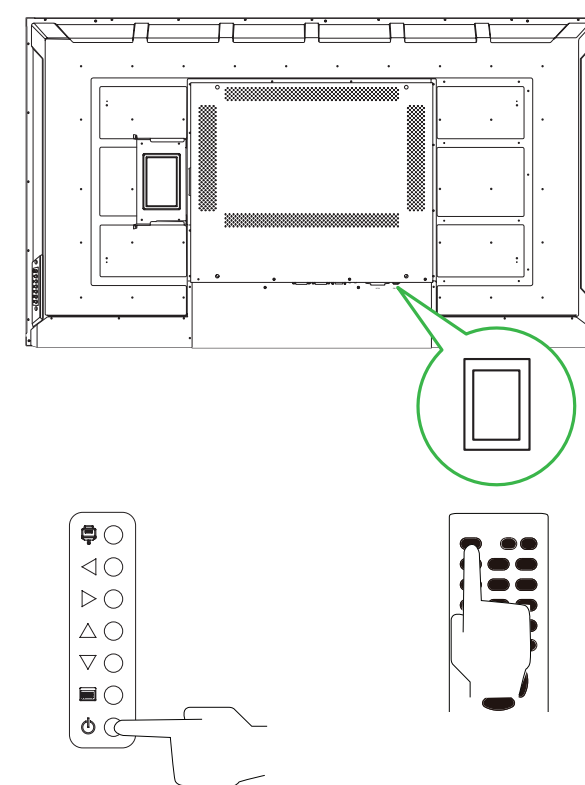
## Getting Started

DK430 / DK550

Plug the power cable into the display and a power source.

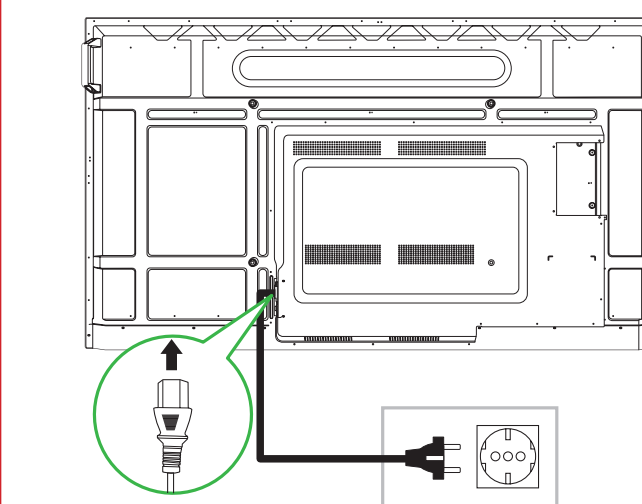


Turn the power switch on, and then press the power button on the display or remote control.

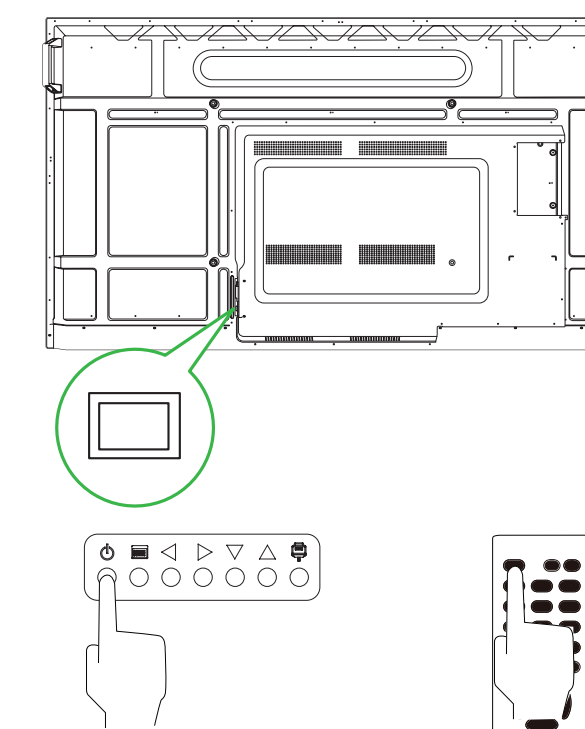


DK650

Plug the power cable into the display and a power source.



Turn the power switch on, and then press the power button on the display or remote control.



## Home Screen

To start screen mirroring follow the on-screen instructions.

